

Model : **PQ-2211**

>>>

Dual-View Video Processor

Versatile Dual-Viewer for Digital Signage



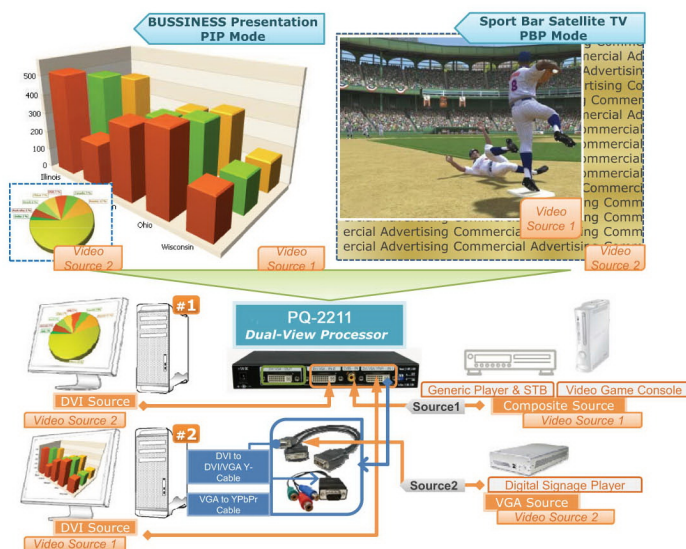
Full HD
1080

WUXGA
x1920
1200

dvi
digital visual interface

FEATURES

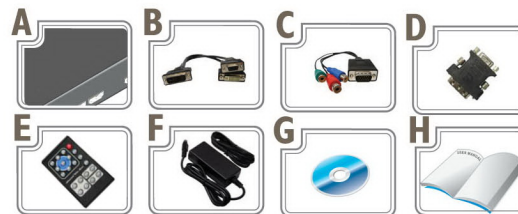
- Four graphic (DVI / VGA) and two video (Component / Composite) Inputs, from 640x480 to 1920x1200, interlaced or progressive
- Dual outputs (DVI / VGA), 640x480 to 1920x1200
- PIP, PAB, full screen modes and adjustable size & position through software
- Titles, borders and colored backgrounds
- Resize, position, flip, zoom & pan and blend output video
- Can be cascaded to obtain more images
- Image parameters and layouts are automatically saved in flash memory and can be recalled for later use
- Several Image parameters and layouts can be saved in flash memory and can be recalled for later use
- Video parameters adjustable (brightness, contrast, color temperature, etc.)
- User-selectable output settings, up to 1920x1200
- Perfectly as a video screen splitter, a video converter and a video switcher
- Firmware upgradable for support of new features and technology enhancements
- IR control and software control through RS-232
- Portable size
- Automatically power-saving mode available



SPECIFICATIONS

Model Name	PQ-2211
Technical	
Role of usage	Multiplexer / video processor
Dual output support	Yes [DVI + VGA]
Video bandwidth	DVI [Single-link 4.95Gbps] VGA [165MHz] Component [30MHz] Composite [13.5MHz]
Video support	480i / 480p / 720p / 1080i / 1080p60 / 1920x1200@60 / 1600x1200@60
Control	RS-232 and IR
PIP / PAP	Yes
Cascadable	Yes
Input TMDS signal	1.2 Volts [peak-to-peak]
ESD protection	Human body model — ±15kV [air-gap discharge] & ±8kV [contact discharge]
PCB stack-up	6-layer board [impedance control — differential 100Ω; single 50Ω]
Input	2x VGA + 2x DVI + 1x component + 1x composite + 1x RS-232
Output	1x DVI + 1x VGA
IR remote control	Electro-optical characteristics: τ = 25° / Carrier frequency: 38kHz
DVI connector	DVI-I [29-pin female, digital only]
VGA connector	HD-15 [15-pin D-sub female]
RS-232 connector	DE-9 [9-pin D-sub female]
RCA connector	75Ω female
Mechanical	
Housing	Metal enclosure
Dimensions (L x W x H)	Model 180 x 103 x 23mm [7.1" x 4" x 0.9"] Package 330 x 200 x 95mm [1'1" x 7.9" x 3.7"] Carton 495 x 440 x 380mm [1'8" x 1'6" x 1'3"]
Weight	Model 480g [1.1 lbs] Package 1345g [3.0 lbs]
Fixedness	Wall-mounting case or wall hanging holes upon request
Power supply	5V 4A DC
Power consumption	10 Watts [max]
Operation temperature	0~40°C [32~104°F]
Storage temperature	-20~60°C [-4~140°F]
Relative humidity	20~90% RH [no condensation]

PACKAGE CONTENTS



- A. PQ-2211
- B. DVI to DVI / VGA breakout cable (DDVY01)
- C. VGA to component breakout cable (VYPBA0)
- D. DVI to VGA adapter (DVA01)
- E. IR remote control
- F. DC 5V 4A in-line with C7 power cord
- G. Installation software CD
- H. User Manual