

Smart Retail Showcase



The theme of Smart Retail Showcase is digital and high quality retail show cabinet. It combines beauty, overall operation, easy maintains, and stable system features; and includes three demonstration modules, menu catalog, brand image display and interactive display modules.

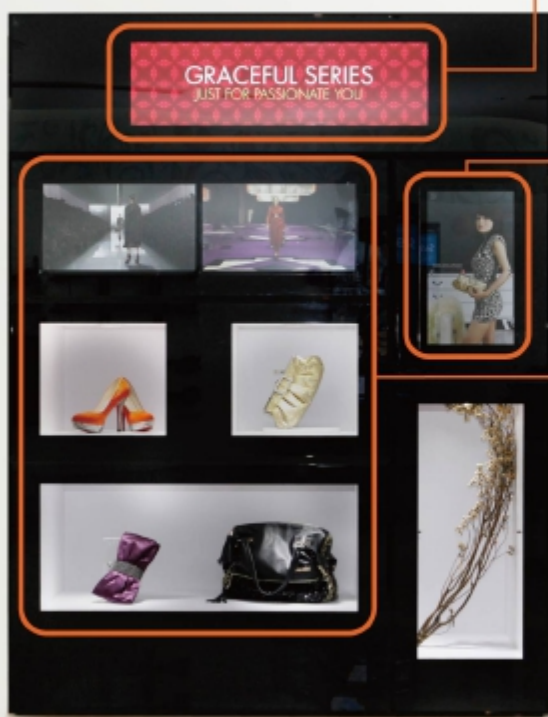
The design of the Smart Retail Showcase integrated business operation, technical, and creation. It is modularized for more application flexibility and compatibility to regular show cabinets. Its simple installation design will let you setup the showcase quicker, transport easier with less cost. And the internal cooling system of the showcase is also optimized for greater system durability. This revolutionary showcase design matched the digital retail trend in the future, and added more interaction and vigorous concepts which made it the best equipment for your business and brand image.

AOpen Systems and Solutions

• Ultra small form factor, easily upgradeable, energy efficient, rugged, green technology designed to fit into virtually any application or scenario. Whether you are looking for basic signage, systems capable of driving high definition content across multiple displays or anything in between, AOpen has the solution for your business.



DIGITAL ENGINE.



Brand image display module

• The brand image is critical to a retail store. The brand image module combines high quality texture design, digital display system and 38" screen that integrated with showcase seamlessly.

- Media player: AOpen Digital Engine
- Screen: 38" wide

Digital menu catalog module (Touched)

• Provides interactive menu query, e-mail product data, and on-line order placement for customers. The store owners will have their own members and manage members' data more easily and interactive with customers.

- All-in-one system: AOpen 22" warmTouch

Interactive display module

• This modules can display any videos regularly and show certain images and information when customer pick up the target product. It will help the customer to make up the purchasing decision.

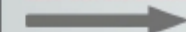
• The interactive display module (WCA) is designed with easy to install and maintained to reduce the time and human costs.

- Media player: AOpen Digital Engine
- Screen: 21.5" OpenFrame
- WCA module

Interactive application



Take-out the article

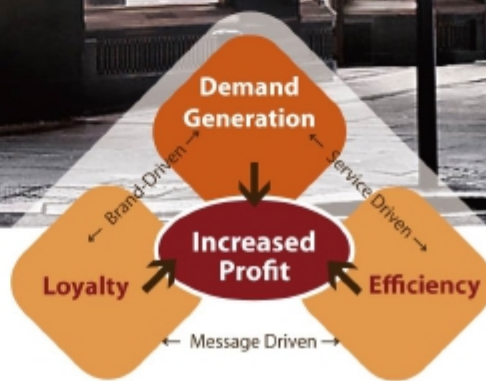


Screen normal display will show the fashion show video



When take-out the handbag, screen will change content for the special article

Smart Retail Show Window



The primary achievement of show window in retail store is attracting and expressing the brand history and value to customers. Before customer purchasing, the show history is a communication channel that telling the brand story and spirit in order to convince customer. This process is the key to raise the brand value from price to service.



DIGITALENGINE

AOpen Systems and Solutions

- Ultra small form factor, easily upgradeable, energy efficient, rugged, green technology designed to fit into virtually any application or scenario. Whether you are looking for basic signage, systems capable of driving high definition content across multiple displays or anything in between, AOpen has the solution for your business.

The Smart Retail Show Window form AOpen can tempt customers and make them walk into the store with the right content and timing. In this way, it will create a chain reaction between store and customer and results in more sales.



Deliver brand image and product value

- Through the lifestyle content design, it creates an atmosphere with brand image and product features.
- Media player: AOpen Digital Engine
- Screen: 21.5" openframe, 42" display

eCatalog (Touched)

- Customers can access menu via touch screen and the other displays will show related information. And the share on social media feature will create more value.
- All-in-one system: AOpen 22" warmTouch

Create atmosphere and cross sales:

- With the Lifestyle content, it will become a fashion advisor and providing products suggestions to create cross sales.

Customer have the rights to control:

- Return the control rights to customer via interactive touch screen. And add more atmosphere with customized lighting and sound.

Keep customer info and share on social media:

- Customer can input E-mail on warmTOUCH to get product and promotion information and share on social media.